

DESIGN SELECTION

OSSICOLOR

innovative aluminium



Indice Index

Design Selection

Pag.

4 PALO

6 JAZZ

14 SIZE L

16 STRIPES

22 FREEDOM

30 LINE 03

40 MODUS

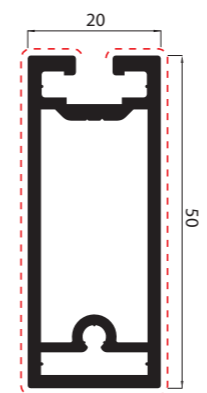
Palo

PALO







Profilo verticale in alluminio di lunghezza massima 2750mm, nero opaco ARC-C35
Vertical aluminium profile, with maximum length 2750mm, matt black ARC-C35

Quote - Quotes



PALO

| STAFFE/GANCI - BRACKETS/ HOOKS | | | | |
|---|---|---|---|---|
| PIATTO.15X3.25FG | ANG.50X30X5.20ARCC35 | KGD.PALOARCC35 | KGS.PALOARCC35 | |
|  |  |  |  | |
| FISSAGGIO A MURO - WALL MOUNTING SYSTEM | | VASSOIO IN ALLUMINIO - ALUMINIUM TRAY | | |
| EDRS.D.1540.200.PALO | | EDRC.D.1540.150.PALO | | |
|  | |  | | |
| PIEDINI - ENDINGS | | STAFFE FISSAGGIO RIPIANI - BRACKETS FOR FIXING SHELVES | | |
| KTI.PALOARCC35 | KTS.PALOARCC35 | KSLXL.75.PALOARCC35 | KSLXV.100.PALOARCC35 | KSLXM.100.PALOARCC35 |
|  |  | Per legno/ For wood | Per vetro/ For glass | Per mobili/ For furniture |
| | |  |  |  |

Ossicolor Srl si riserva di eseguire le modifiche che riterrà opportune senza darne preavviso.
Ossicolor Srl reserves the right to modify and update the manual, without notice.

DESIGN SELECTION

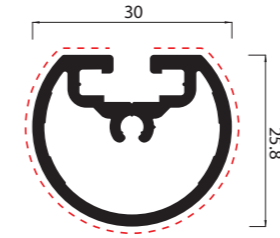
DESIGN SELECTION





Profilo verticale in alluminio di lunghezza massima 2750mm, nero opaco ARC-C35
Vertical aluminium profile, with maximum length 2750mm, matt black ARC-C35

Quote - Quotes



PIEDINI/TAPPI - ENDINGS

KTS.JAZZARCC35

KTI.JAZZARCC35

STAFFE FISSAGGIO RIPIANI - BRACKETS FOR FIXING SHELVES

KSLXL.75.PALOARCC35

KSLXV.100.PALOARCC35

KSLXM.100.PALOARCC35

Per legno/ For wood

Per vetro/ For glass

Per mobili/ For furniture



FISSAGGIO A PARETE - WALL MOUNTING SYSTEM
EDR30X20.150/180.JAZZARCC35

VASSOIO IN ALLUMINIO - ALUMINIUM TRAY



STAFFE/GANCI - BRACKETS/HOOKS

PIATTO.15X3.25FG

KGD.PALOARCC35

KGS.PALOARCC35



CODICE / CODE

DIMENSIONI / DIMENSIONS

| | |
|---------------------------|-------------|
| VB559X230X25.PALOARCC35* | 559x230x25 |
| VB559X230X60.PALOARCC35* | 559x230x60 |
| VB859X230X25.PALOARCC35* | 859x230x25 |
| VB859X230X60.PALOARCC35* | 859x230x60 |
| VB1159X230X25.PALOARCC35* | 1159x230x25 |
| VB1159X230X60.PALOARCC35* | 1159x230x60 |

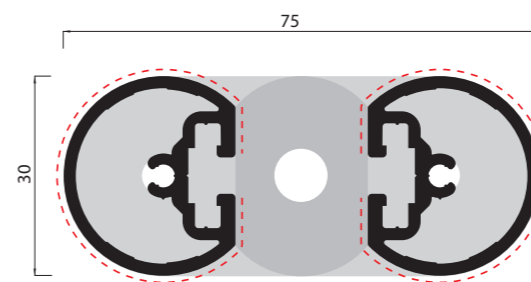
*I vassoi includono le staffe laterali per fissaggio, già montate.
*Trays come with side brackets for fixing, already mounted.

Jazz Double wall mounted



Pilastro verticale in alluminio di lunghezza massima 2680mm, nero opaco ARC-C35
Aluminium pillar, with maximum length 2680mm, matt black ARC-C35

Quote - Quotes



PIEDINI/TAPPI - ENDINGS

SOLUZIONE 1

SOLUZIONE 2



FISSAGGIO A PARETE - WALL MOUNTING SYSTEM
KTJDP.30X20.150/180.JAZZARCC35

STAFFE FISSAGGIO RIPIANI - BRACKETS FOR FIXING SHELVES

KSLXL.75.PALOARCC35

KSLXV.100.PALOARCC35

KSLXM.100.PALOARCC35

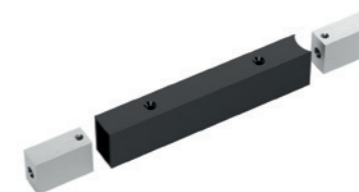
Per legno/ For wood

Per vetro/ For glass

Per mobili/ For furniture



VASSOIO IN ALLUMINIO - ALUMINIUM TRAY



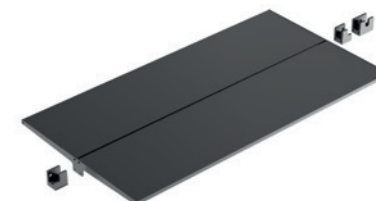
STAFFE/GANCI - BRACKETS/HOOKS

PIATTO.15X3.25FG

KGD.PALOARCC35

KGS.PALOARCC35

MENSOLA "FLY" CON SUPPORTI - "FLY" SHELF WITH HOOKS

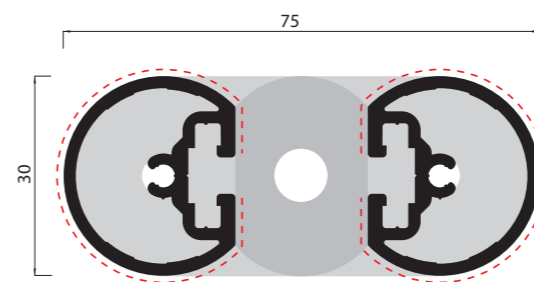


Jazz Double free standing



Pilastro verticale in alluminio di lunghezza 3000mm, nero opaco ARC-C35
Aluminium pillar, length 3000mm, matt black ARC-C35

Quote - Quotes



PIEDINI/TAPPI - ENDINGS
KTI/JAZZARCC35



STAFFE FISSAGGIO RIPIANI - BRACKETS FOR FIXING SHELVES

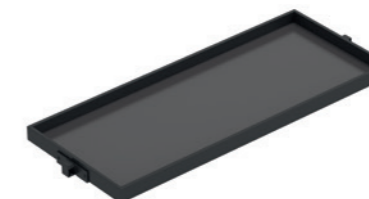
| | | |
|---------------------|----------------------|---------------------------|
| KSLXL.75.PALOARCC35 | KSLXV.100.PALOARCC35 | KSLXM.100.PALOARCC35 |
| Per legno/ For wood | Per vetro/ For glass | Per mobili/ For furniture |



VASSOIO IN ALLUMINIO - ALUMINIUM TRAY



STAFFE/GANCI - BRACKETS/HOOKS
PIATTO.15X3.25FG KGD.PALOARCC35 KGS.PALOARCC35



MENSOLA "FLY" CON SUPPORTI - "FLY" SHELF WITH HOOKS

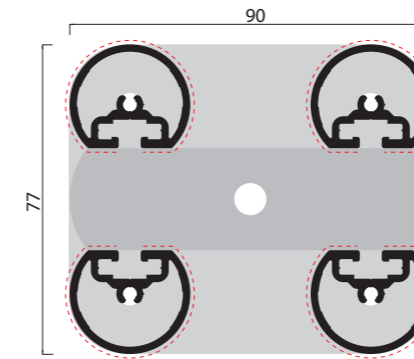


Jazz 4x4



Pilastro verticale in alluminio di lunghezza 3000mm, nero opaco ARC-C35
Aluminium pillar, length 3000mm, matt black ARC-C35

Quote - Quotes



PIEDINI/TAPPI - ENDINGS
KTI/JAZZARCC35



STAFFE FISSAGGIO RIPIANI - BRACKETS FOR FIXING SHELVES

| | | |
|---------------------|----------------------|---------------------------|
| KSLXL.75.PALOARCC35 | KSLXV.100.PALOARCC35 | KSLXM.100.PALOARCC35 |
| Per legno/ For wood | Per vetro/ For glass | Per mobili/ For furniture |



VASSOIO IN ALLUMINIO - ALUMINIUM TRAY



STAFFE/GANCI - BRACKETS/HOOKS

| | |
|------------------|---------------|
| PIATTO.15X3.25FG | GXJAZZ4ARCC35 |
|------------------|---------------|



| CODICE / CODE | DIMENSIONI / DIMENSIONS |
|---------------------------|-------------------------|
| VB559X230X25.PALOARCC35* | 559x230x25 |
| VB559X230X60.PALOARCC35* | 559x230x60 |
| VB859X230X25.PALOARCC35* | 859x230x25 |
| VB859X230X60.PALOARCC35* | 859x230x60 |
| VB1159X230X25.PALOARCC35* | 1159x230x25 |
| VB1159X230X60.PALOARCC35* | 1159x230x60 |

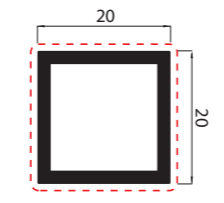
*I vassoi includono le staffe laterali per fissaggio, già montate.
*Trays come with side brackets for fixing, already mounted.

Size L



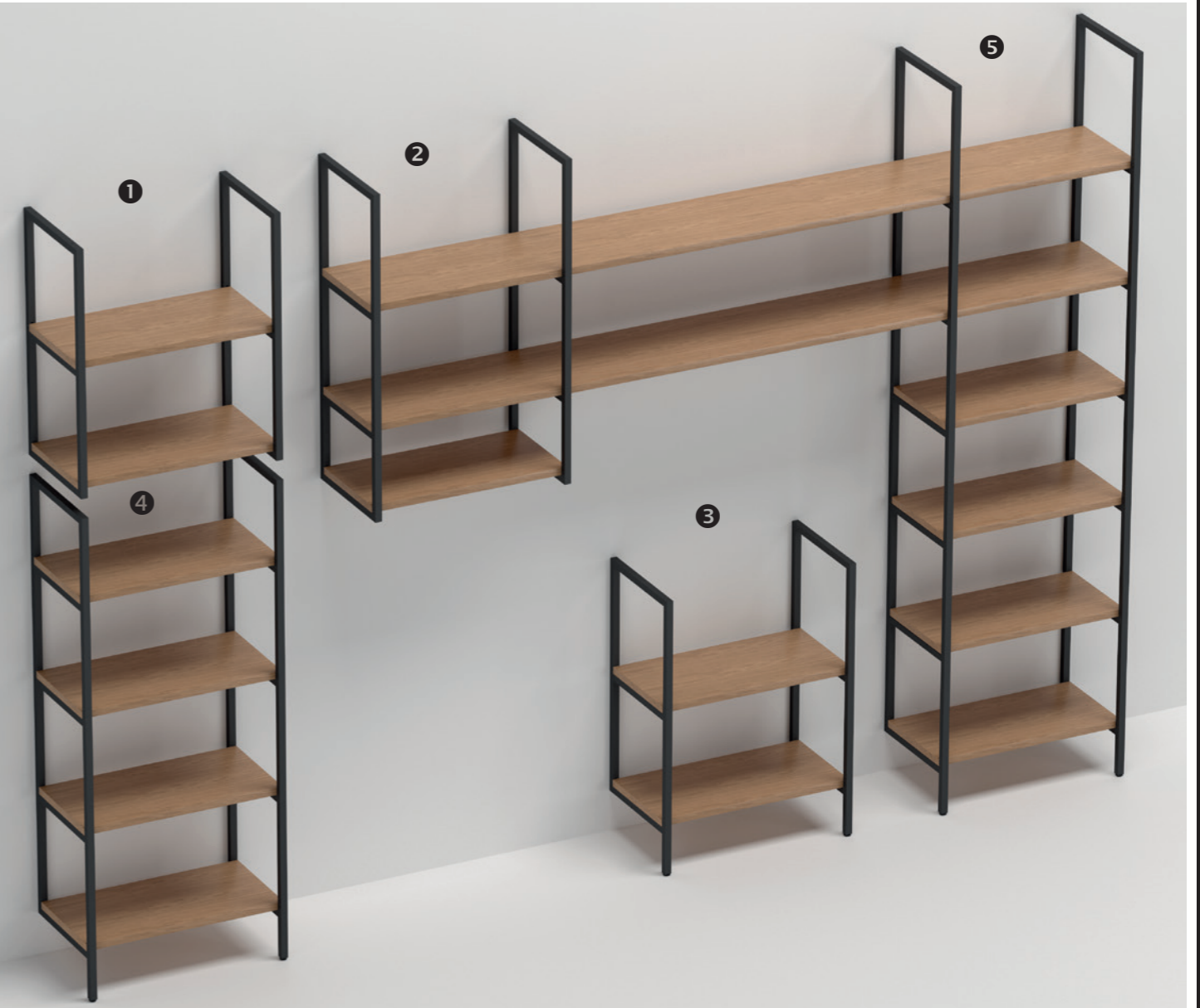
Profilo in alluminio da 20x20mm
Aluminium profile 20x20mm

Quote - Quotes



| VARIANTI / VARIANTS | | | | |
|---------------------|----------------|--|-------------------------|-----|
| RIF / REF | CODICE / CODE | DESCRIZIONE / DESCRIPTION | DIMENSIONI / DIMENSIONS | UM |
| 1 | SIZE.L720x342 | Spalla 20x20 premontata con predisposizione per 2 mensole* Pre-assembled frame for 2 shelves* | 720x342 | Kit |
| 2 | SIZE.L960x342 | Spalla 20x20 premontata con predisposizione per 3 mensole* Pre-assembled frame for 3 shelves* | 960x342 | Kit |
| 3 | SIZE.L840x342 | Spalla 20x20 premontata con predisposizione per 2 mensole* Pre-assembled frame for 2 shelves* | 840x342 | Kit |
| 4 | SIZE.L1140x342 | Spalla 20x20 premontata con predisposizione per 4 mensole* Pre-assembled frame for 4 shelves* | 1140x342 | Kit |
| 5 | SIZE.L2220x342 | Spalla 20x20 premontata con predisposizione per 6 mensole* Pre-assembled frame for 6 shelves* | 2220x342 | Kit |

*Mensole non incluse.
*Shelves not included.



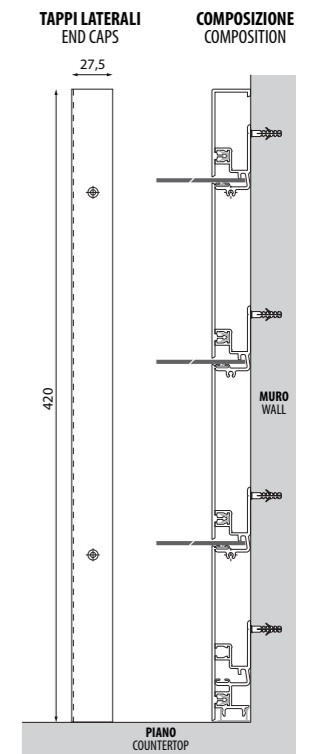
Ossicolor Srl si riserva di eseguire le modifiche che riterrà opportune senza darne preavviso.
Ossicolor Srl reserves the right to modify and update the manual, without notice.



Stripes



Schienale a tre livelli in alluminio a lunghezza variabile, integrabile con accessori.
Aluminium boiserie of customisable length, accessorisable.



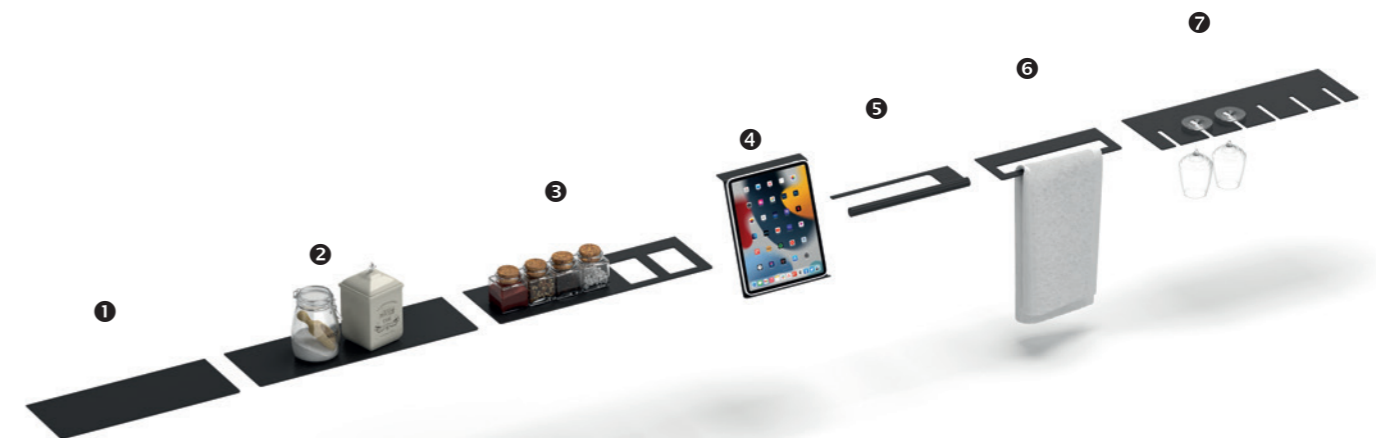
VARIANTI / VARIANTS

| CODICE / CODE | DESCRIZIONE / DESCRIPTION | FINITURE DISPONIBILI / AVAILABLE FINISHES | | | DIMENSIONI / DIMENSIONS |
|---------------|---|---|---------|---------|-------------------------|
| STRIPES.S | Stripes fino a (vedi DIMENSIONI) / Stripes up to (see DIMENSIONS) | ASN-C0 | ASN-C32 | ASN-C35 | 1400 |
| STRIPES.M | Stripes fino a (vedi DIMENSIONI) / Stripes up to (see DIMENSIONS) | ASN-C0 | ASN-C32 | ASN-C35 | 2130 |
| STRIPES.L | Stripes fino a (vedi DIMENSIONI) / Stripes up to (see DIMENSIONS) | ASN-C0 | ASN-C32 | ASN-C35 | 4270 |

ACCESSORI / ACCESSORIES

| RIF / REF | CODICE / CODE | DESCRIZIONE / DESCRIPTION | FINITURE DISPONIBILI / AVAILABLE FINISHES | | | DIMENSIONI / DIMENSIONS |
|-----------|----------------|--|---|---------|---------|-------------------------|
| 1 | LAM.3MP400 | Mensola 400mm / Shelf 400mm | ARC-C0 | ARC-C32 | ARC-C35 | 400x160x3 |
| 2 | LAM.3MP500 | Mensola 500mm / Shelf 500mm | ARC-C0 | ARC-C32 | ARC-C35 | 500x160x3 |
| 3 | LAM.3PB500 | Mensola porta barattoli / Jars holder | ARC-C0 | ARC-C32 | ARC-C35 | 500x160x3 |
| 4 | LAM.3PI | Mensola porta tablet / Tablet holder | ARC-C0 | ARC-C32 | ARC-C35 | 200x235x3 |
| 5 | D.1314.287PSSX | Mensola porta rotolo / Kitchen paper roll holder | ARC-C0 | ARC-C32 | ARC-C35 | 287x93x3 |
| 6 | LAM.3PCA300 | Mensola porta canovaccio / Towel holder | ARC-C0 | ARC-C32 | ARC-C35 | 300x110x3 |
| 7 | LAM.3PC500 | Mensola porta calici / Wine glasses holder | ARC-C0 | ARC-C32 | ARC-C35 | 500x160x3 |

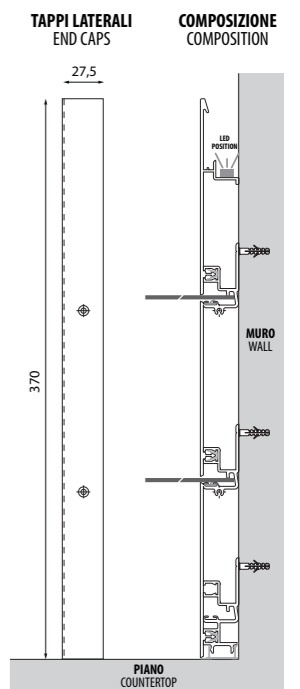
ACCESSORI / ACCESSORIES



Stripes LED



Schienale a tre livelli in alluminio a lunghezza variabile, integrabile con accessori, predisposta per LED.
Aluminium boiserie of customisable length, accessorisable, LED equipable.



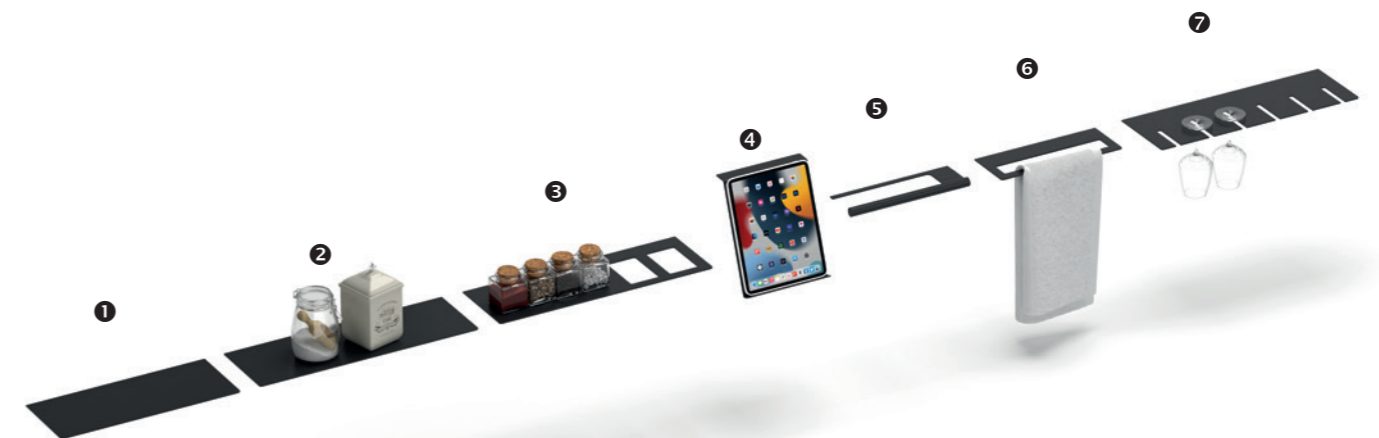
VARIANTI / VARIANTS

| CODICE / CODE | DESCRIZIONE / DESCRIPTION | FINITURE DISPONIBILI / AVAILABLE FINISHES | | | DIMENSIONI / DIMENSIONS |
|---------------|---|---|---------|---------|-------------------------|
| STRIPES.S.LED | Stripes fino a (vedi DIMENSIONI) / Stripes up to (see DIMENSIONS) | ASN-C0 | ASN-C32 | ASN-C35 | 1400 |
| STRIPES.M.LED | Stripes fino a (vedi DIMENSIONI) / Stripes up to (see DIMENSIONS) | ASN-C0 | ASN-C32 | ASN-C35 | 2130 |
| STRIPES.L.LED | Stripes fino a (vedi DIMENSIONI) / Stripes up to (see DIMENSIONS) | ASN-C0 | ASN-C32 | ASN-C35 | 4270 |

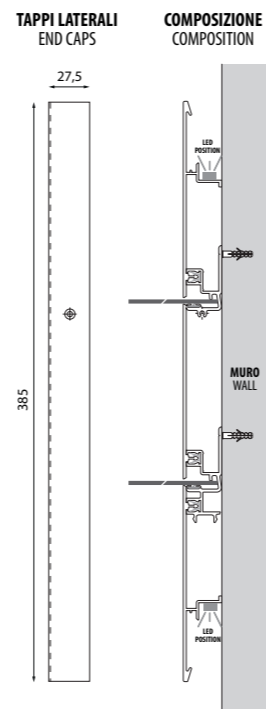
ACCESSORI / ACCESSORIES

| RIF / REF | CODICE / CODE | DESCRIZIONE / DESCRIPTION | FINITURE DISPONIBILI / AVAILABLE FINISHES | | | DIMENSIONI / DIMENSIONS |
|-----------|----------------|--|---|---------|---------|-------------------------|
| 1 | LAM.3MP400 | Mensola 400mm / Shelf 400mm | ARC-C0 | ARC-C32 | ARC-C35 | 400x160x3 |
| 2 | LAM.3MP500 | Mensola 500mm / Shelf 500mm | ARC-C0 | ARC-C32 | ARC-C35 | 500x160x3 |
| 3 | LAM.3PB500 | Mensola porta barattoli / Jars holder | ARC-C0 | ARC-C32 | ARC-C35 | 500x160x3 |
| 4 | LAM.3PI | Mensola porta tablet / Tablet holder | ARC-C0 | ARC-C32 | ARC-C35 | 200x235x3 |
| 5 | D.1314.287PSSX | Mensola porta rotolo / Kitchen paper roll holder | ARC-C0 | ARC-C32 | ARC-C35 | 287x93x3 |
| 6 | LAM.3PCA300 | Mensola porta canovaccio / Towel holder | ARC-C0 | ARC-C32 | ARC-C35 | 300x110x3 |
| 7 | LAM.3PC500 | Mensola porta calici / Wine glasses holder | ARC-C0 | ARC-C32 | ARC-C35 | 500x160x3 |

ACCESSORI / ACCESSORIES



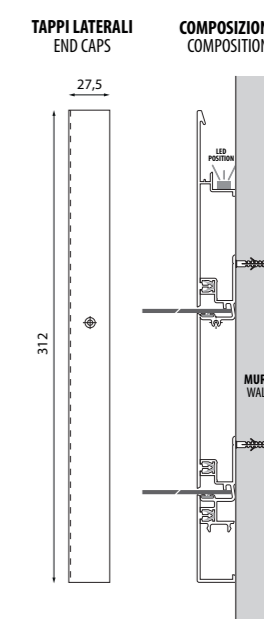
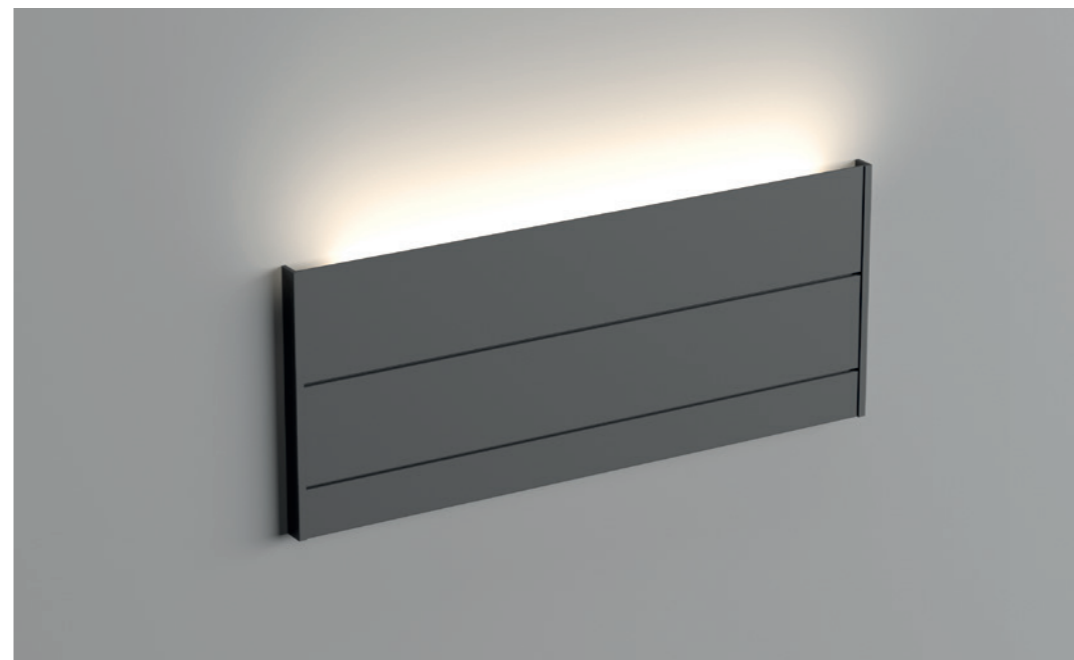
Schienale a tre livelli in alluminio a lunghezza variabile, integrabile con accessori, predisposta per LED.
Aluminium boiserie of customisable length, accessorisable, LED equipable.



VARIANTI/ VARIANTS

| CODICE / CODE | DESCRIZIONE / DESCRIPTION | FINITURE DISPONIBILI / AVAILABLE FINISHES | | | DIMENSIONI / DIMENSIONS |
|----------------|---|---|---------|---------|-------------------------|
| STRIPES.S.LED2 | Stripes fino a (vedi DIMENSIONI) / Stripes up to (see DIMENSIONS) | ASN-C0 | ASN-C32 | ASN-C35 | 1400 |
| STRIPES.M.LED2 | Stripes fino a (vedi DIMENSIONI) / Stripes up to (see DIMENSIONS) | ASN-C0 | ASN-C32 | ASN-C35 | 2130 |
| STRIPES.L.LED2 | Stripes fino a (vedi DIMENSIONI) / Stripes up to (see DIMENSIONS) | ASN-C0 | ASN-C32 | ASN-C35 | 4270 |

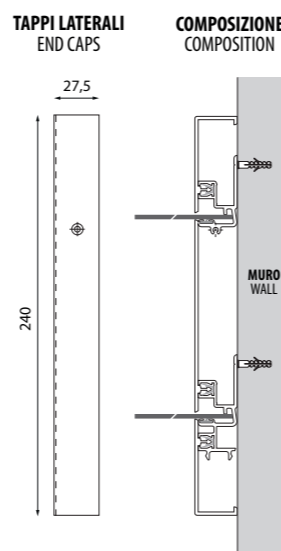
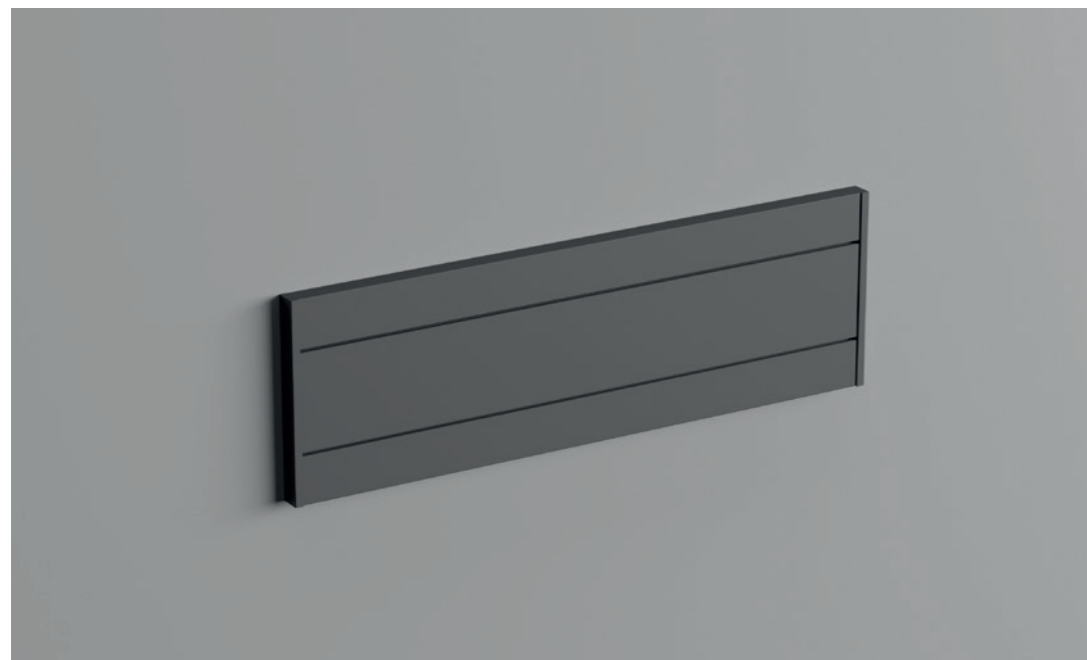
Schienale a tre livelli in alluminio a lunghezza variabile, integrabile con accessori, predisposta per LED.
Aluminium boiserie of customisable length, accessorisable, LED equipable.



VARIANTI/ VARIANTS

| CODICE / CODE | DESCRIZIONE / DESCRIPTION | FINITURE DISPONIBILI / AVAILABLE FINISHES | | | DIMENSIONI / DIMENSIONS |
|-------------------|---|---|---------|---------|-------------------------|
| STRIPES.S.LED.SUP | Stripes fino a (vedi DIMENSIONI) / Stripes up to (see DIMENSIONS) | ASN-C0 | ASN-C32 | ASN-C35 | 1400 |
| STRIPES.M.LED.SUP | Stripes fino a (vedi DIMENSIONI) / Stripes up to (see DIMENSIONS) | ASN-C0 | ASN-C32 | ASN-C35 | 2130 |
| STRIPES.L.LED.SUP | Stripes fino a (vedi DIMENSIONI) / Stripes up to (see DIMENSIONS) | ASN-C0 | ASN-C32 | ASN-C35 | 4270 |

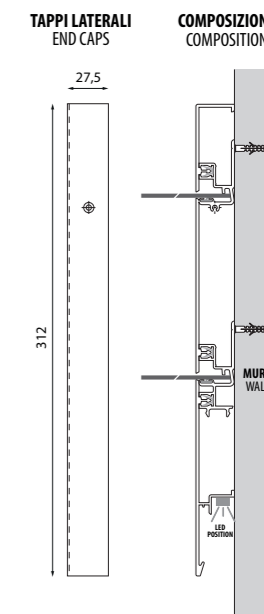
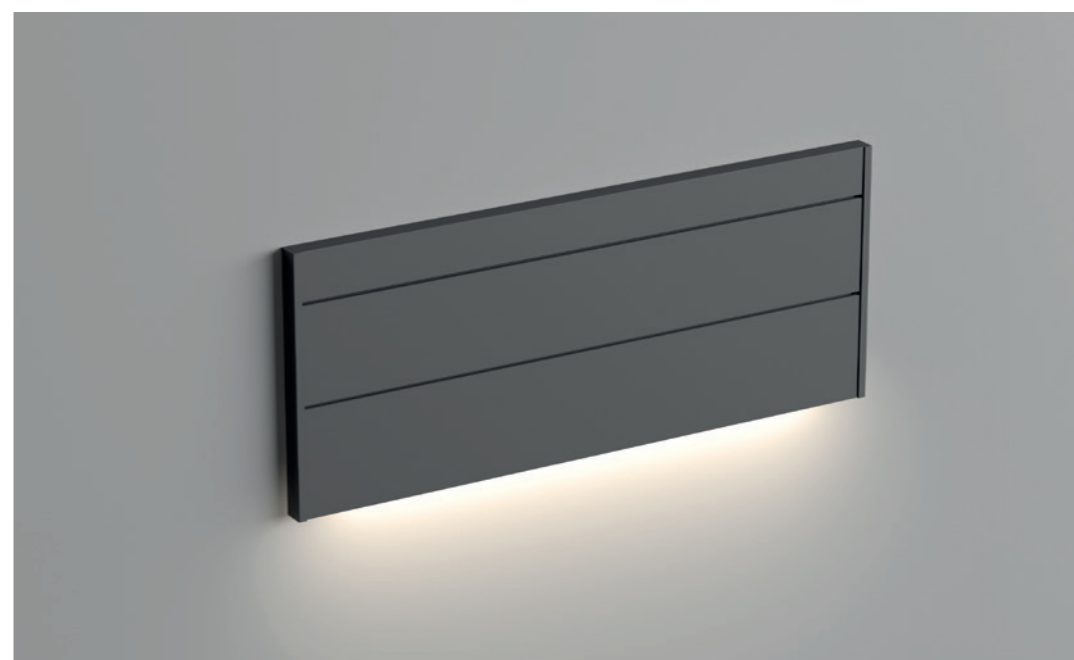
Schienale a tre livelli in alluminio a lunghezza variabile, integrabile con accessori.
Aluminium boiserie of customisable length, accessorisable.



VARIANTI/ VARIANTS

| CODICE / CODE | DESCRIZIONE / DESCRIPTION | FINITURE DISPONIBILI / AVAILABLE FINISHES | | | DIMENSIONI / DIMENSIONS |
|------------------|---|---|---------|---------|-------------------------|
| STRIPES.S.PARETE | Stripes fino a (vedi DIMENSIONI) / Stripes up to (see DIMENSIONS) | ASN-C0 | ASN-C32 | ASN-C35 | 1400 |
| STRIPES.M.PARETE | Stripes fino a (vedi DIMENSIONI) / Stripes up to (see DIMENSIONS) | ASN-C0 | ASN-C32 | ASN-C35 | 2130 |
| STRIPES.L.PARETE | Stripes fino a (vedi DIMENSIONI) / Stripes up to (see DIMENSIONS) | ASN-C0 | ASN-C32 | ASN-C35 | 4270 |

Schienale a tre livelli in alluminio a lunghezza variabile, integrabile con accessori, predisposta per LED.
Aluminium boiserie of customisable length, accessorisable, LED equipable.



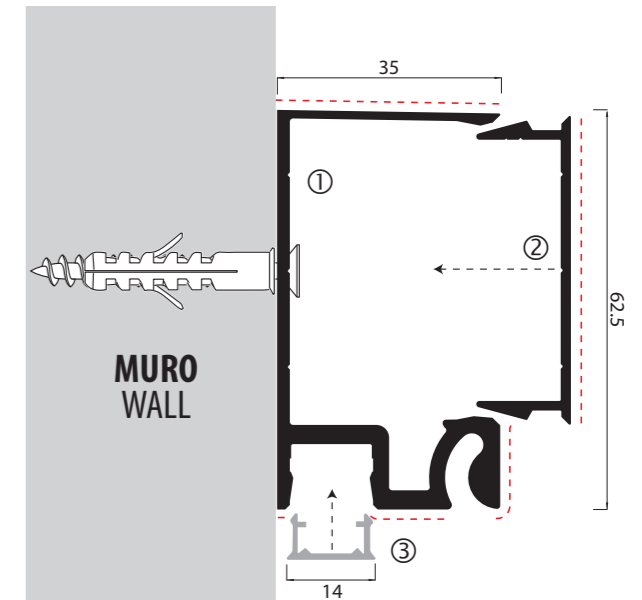
VARIANTI/ VARIANTS

| CODICE / CODE | DESCRIZIONE / DESCRIPTION | FINITURE DISPONIBILI / AVAILABLE FINISHES | | | DIMENSIONI / DIMENSIONS |
|-------------------|---|---|---------|---------|-------------------------|
| STRIPES.S.LED.INF | Stripes fino a (vedi DIMENSIONI) / Stripes up to (see DIMENSIONS) | ASN-C0 | ASN-C32 | ASN-C35 | 1400 |
| STRIPES.M.LED.INF | Stripes fino a (vedi DIMENSIONI) / Stripes up to (see DIMENSIONS) | ASN-C0 | ASN-C32 | ASN-C35 | 2130 |
| STRIPES.L.LED.INF | Stripes fino a (vedi DIMENSIONI) / Stripes up to (see DIMENSIONS) | ASN-C0 | ASN-C32 | ASN-C35 | 4270 |

Freedom



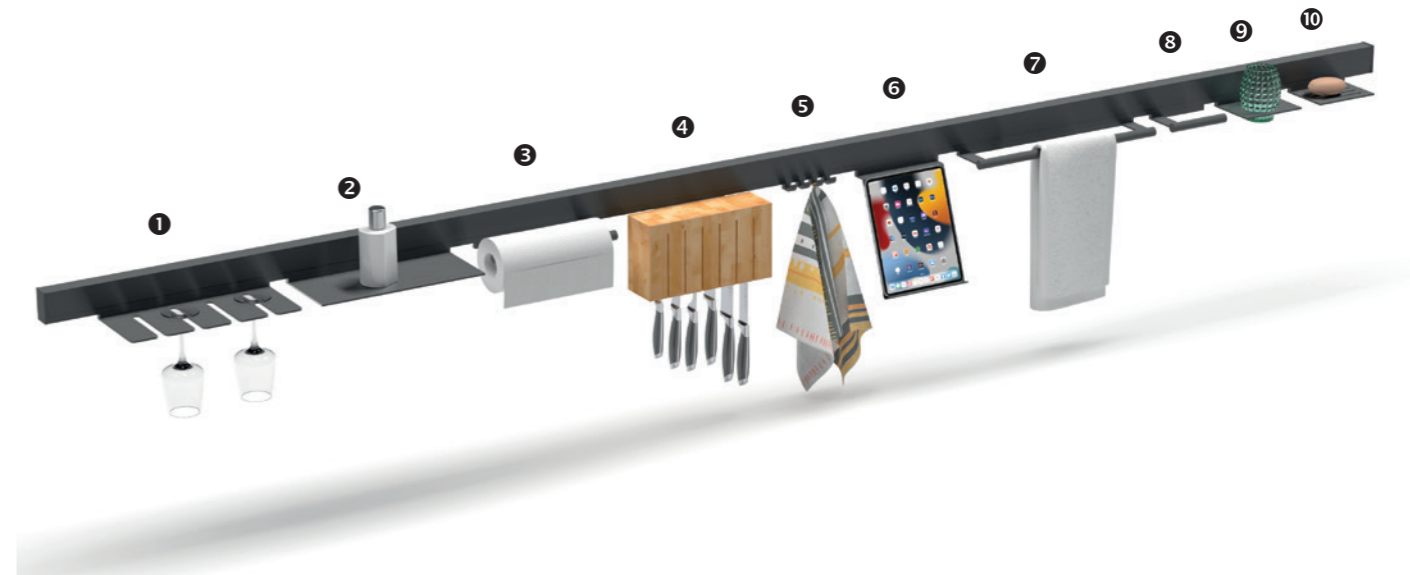
Barra accessori, integrabile con accessori, predisposta per LED.
 Accessoriable rail bar, LED equipable.



FREEDOM PROFILO / FREEDOM PROFILE

| RIF / REF | CODICE / CODE | DESCRIZIONE / DESCRIPTION | FINITURE DISPONIBILI / AVAILABLE FINISHES | DIMENSIONI / DIMENSIONS |
|-----------|--------------------|--|---|-------------------------|
| ① | P027920.4350ARSC35 | Profilo a muro / Wall profile | ARS-C35 | 4350 |
| ② | D.1381.4350ARSC35 | Profilo cover / Cover Profile | ARS-C35 | 4350 |
| ③ | 9721/47-OP | Cover per LED in PVC* / PVC LED cover* | PVC | 4360 |
| ④ | CTXF1ARCC35 | Tappi laterali / End caps | ARC-C35 | --- |

*Luci a LED non incluse.
 *LED lights not included.



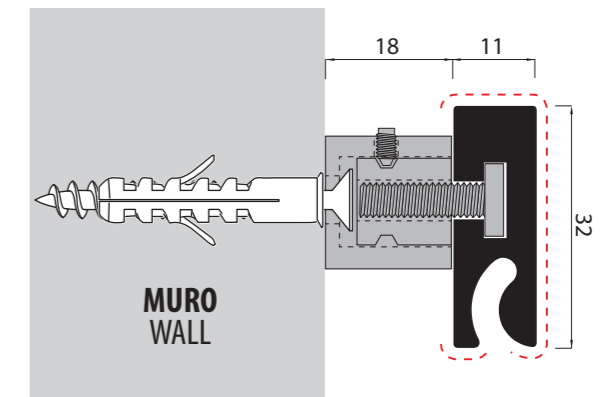
ACCESSORI / ACCESSORIES

| RIF / REF | CODICE / CODE | DESCRIZIONE / DESCRIPTION | FINITURE DISPONIBILI / AVAILABLE FINISHES | DIMENSIONI / DIMENSIONS |
|-----------|----------------------|--|---|-------------------------|
| ① | D.1311.350KPCLARCC35 | Kit porta calici / Wine glasses holder | ARC-C35 | 350 |
| ② | D.1314.350MPARCC35 | Mensola / Shelf | ARC-C35 | 350 |
| ③ | D.1314.287PSXARCC35 | Porta rotolo da cucina / Kitchen paper roll holder | ARC-C35 | 287 |
| ④ | PCOLTELLI.ARCC35 | Porta coltelli / Knives holder | ARC-C35 | 287 |
| ⑤ | SET4GANCIARCC35 | Set 4 ganci / 4-hook set | ARC-C35 | --- |
| ⑥ | PIPAD.ARCC35 | Porta tablet / Tablet holder | ARC-C35 | 200 |
| ⑦ | D.1314.450PAARCC35 | Porta canovaccio / Towel holder | ARC-C35 | 450 |
| ⑧ | D.1314.140PRARCC35 | Porta rotolo carta igienica / Toilet paper roll holder | ARC-C35 | 140 |
| ⑨ | D.1311.150PBARCC35 | Porta bicchiere / Glass holder | ARC-C35 | 150 |
| ⑩ | D.1311.150PSARCC35 | Porta saponetta / Soap holder | ARC-C35 | 150 |

Freedom 2

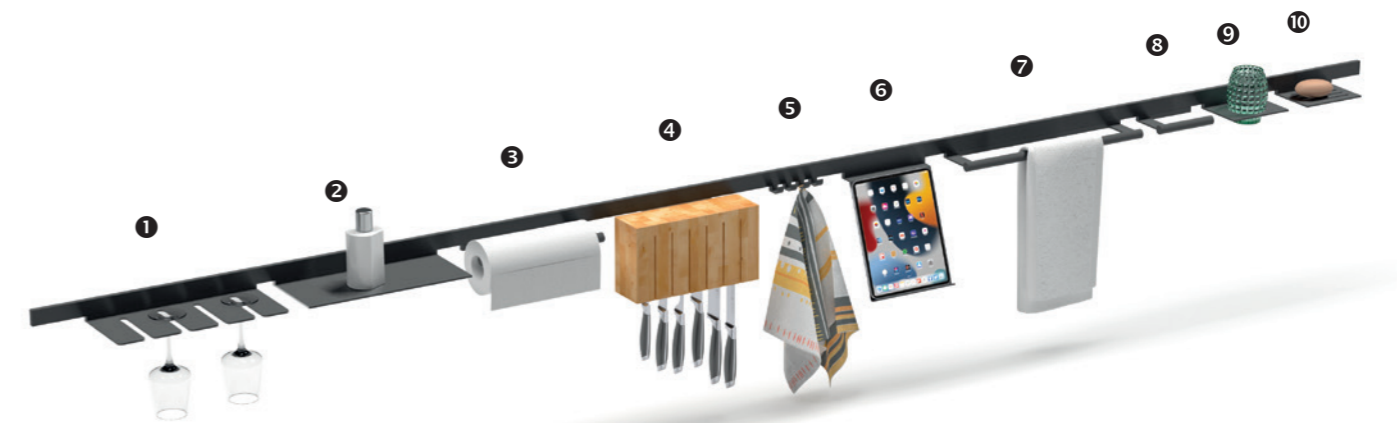


Barra accessori, integrabile con accessori.
 Accessoriable rail bar.



FREEDOM 2 PROFILO / FREEDOM 2 PROFILE

| CODICE / CODE | DESCRIZIONE / DESCRIPTION | FINITURE DISPONIBILI / AVAILABLE FINISHES | DIMENSIONI / DIMENSIONS |
|-------------------|--|---|-------------------------|
| D.1310.4000ARCC35 | Barra accessori Freedom 2 / Accessoriable rail bar | ARC-C35 | 4000 |



ACCESSORI / ACCESSORIES

| RIF / REF | CODICE / CODE | DESCRIZIONE / DESCRIPTION | FINITURE DISPONIBILI / AVAILABLE FINISHES | DIMENSIONI / DIMENSIONS |
|-----------|---------------------|--|---|-------------------------|
| 1 | D.1311.350KPLARCC35 | Kit porta calici / Wine glasses holder | ARC-C35 | 350 |
| 2 | D.1314.350MPARCC35 | Mensola / Shelf | ARC-C35 | 350 |
| 3 | D.1314.287PSXARCC35 | Porta rotolo da cucina / Kitchen paper roll holder | ARC-C35 | 287 |
| 4 | PCOLTELLI.ARCC35 | Porta coltelli / Knives holder | ARC-C35 | 287 |
| 5 | SET4GANCIARCC35 | Set 4 ganci / 4-hook set | ARC-C35 | --- |
| 6 | PIPAD.ARCC35 | Porta tablet / Tablet holder | ARC-C35 | 200 |
| 7 | D.1314.450PAARCC35 | Porta canovaccio / Towel holder | ARC-C35 | 450 |
| 8 | D.1314.140PRARCC35 | Porta rotolo carta igienica / Toilet paper roll holder | ARC-C35 | 140 |
| 9 | D.1311.150PBARCC35 | Porta bicchiere / Glass holder | ARC-C35 | 150 |
| 10 | D.1311.150PSARCC35 | Porta saponetta / Soap holder | ARC-C35 | 150 |

FISSAGGIO A MURO - WALL MOUNTING SYSTEM

Coppia tappi / End caps CTXF2ARCC35

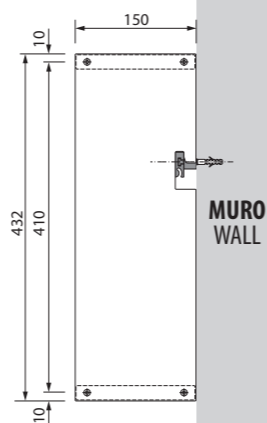
Kit fissaggio / Mounting kit D.1310



Tasselli non inclusi. / Wall plugs not included.

Fianchi per Freedom 2

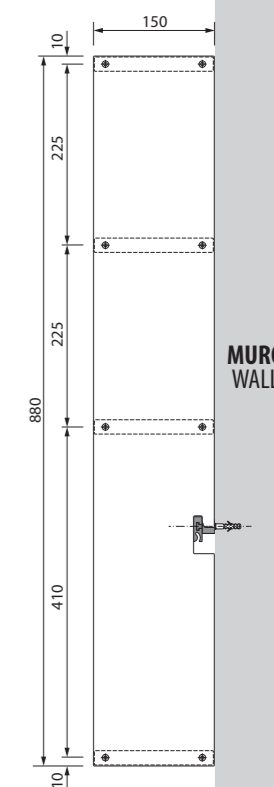




FIANCHI IN ALLUMINIO, ALTEZZA 432 / ALUMINIUM SIDES, HEIGHT 432

| CODICE / CODE | DESCRIZIONE / DESCRIPTION | FINITURE DISPONIBILI / AVAILABLE FINISHES | DIMENSIONI / DIMENSIONS |
|-----------------|--|---|-------------------------|
| CFMXF.432ASNC32 | Coppia fianchi per Freedom 2 titanio metal* / Metal Titanium sides for Freedom 2* | ASN-C32 | 432x150x6 |
| CFMXF.432ARSC35 | Coppia fianchi per Freedom 2 nero spazzolato* / Brushed black sides for Freedom 2* | ARS-C35 | 432x150x6 |

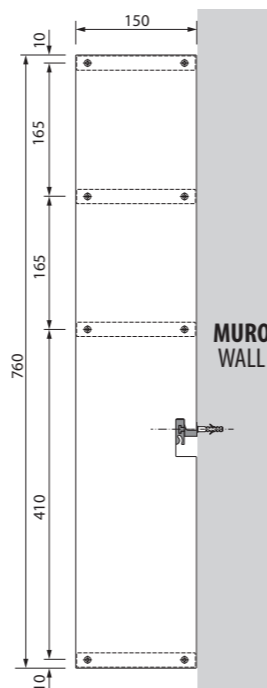
* Ripiani in legno non inclusi / * Wooden shelves not included



FIANCHI IN ALLUMINIO, ALTEZZA 880 / ALUMINIUM SIDES, HEIGHT 880

| CODICE / CODE | DESCRIZIONE / DESCRIPTION | FINITURE DISPONIBILI / AVAILABLE FINISHES | DIMENSIONI / DIMENSIONS |
|-----------------|--|---|-------------------------|
| CFMXF.880ASNC32 | Coppia fianchi per Freedom 2 titanio metal* / Metal Titanium sides for Freedom 2* | ASN-C32 | 880x150x6 |
| CFMXF.880ARSC35 | Coppia fianchi per Freedom 2 nero spazzolato* / Brushed black sides for Freedom 2* | ARS-C35 | 880x150x6 |

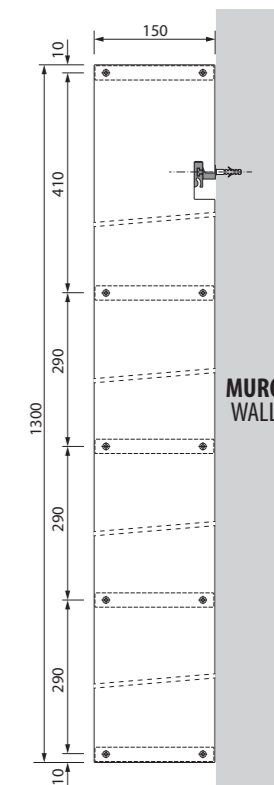
* Ripiani in legno non inclusi / * Wooden shelves not included



FIANCHI IN ALLUMINIO, ALTEZZA 760 / ALUMINIUM SIDES, HEIGHT 760

| CODICE / CODE | DESCRIZIONE / DESCRIPTION | FINITURE DISPONIBILI / AVAILABLE FINISHES | DIMENSIONI / DIMENSIONS |
|-----------------|--|---|-------------------------|
| CFMXF.760ASNC32 | Coppia fianchi per Freedom 2 titanio metal* / Metal Titanium sides for Freedom 2* | ASN-C32 | 760x150x6 |
| CFMXF.760ARSC35 | Coppia fianchi per Freedom 2 nero spazzolato* / Brushed black sides for Freedom 2* | ARS-C35 | 760x150x6 |

* Ripiani in legno non inclusi / * Wooden shelves not included



FIANCHI IN ALLUMINIO, ALTEZZA 1300 / ALUMINIUM SIDES, HEIGHT 1300

| CODICE / CODE | DESCRIZIONE / DESCRIPTION | FINITURE DISPONIBILI / AVAILABLE FINISHES | DIMENSIONI / DIMENSIONS |
|------------------|--|---|-------------------------|
| CFMXF.1300ASNC32 | Coppia fianchi per Freedom 2 titanio metal* / Metal Titanium sides for Freedom 2* | ASN-C32 | 1300x150x6 |
| CFMXF.1300ARSC35 | Coppia fianchi per Freedom 2 nero spazzolato* / Brushed black sides for Freedom 2* | ARS-C35 | 1300x150x6 |

* Ripiani in legno non inclusi / * Wooden shelves not included

Boiserie Line 03 19mm



Inquadra il QR code per il video delle istruzioni di montaggio nel nostro canale YouTube®.
Scan the QR code for mounting instructions on our YouTube® channel.



LINE 03 - PROFILO DI CHIUSURA SUPERIORE/INFERIORE



PROFILO BOISERIE DI CHIUSURA SUPERIORE/INFERIORE / UPPER/LOWER BOISERIE PROFILE

| CODICE / CODE | DESCRIZIONE / DESCRIPTION | FINITURE DISPONIBILI / AVAILABLE FINISHES | | | | DIMENSIONI / DIMENSIONS |
|---------------|--|---|---------|-------|-----|-------------------------|
| P032719.4350 | Boiserie superiore/inferiore forata* / Upper/Lower boiserie profile* | ASN-C32 | ARC-C35 | VLMOA | VBT | 4350 |

* con 1 foro a passo.
* with pitch holes.

BOISERIE LINE 03 - PROFILO INTERMEDIO PER LED



PROFILO BOISERIE DI INTERMEDIO PER LED / INTERMEDIATE BOISERIE PROFILE, LED EQUIPABLE

| CODICE / CODE | DESCRIZIONE / DESCRIPTION | FINITURE DISPONIBILI / AVAILABLE FINISHES | | | | DIMENSIONI / DIMENSIONS |
|---------------|---|---|---------|-------|-----|-------------------------|
| P032953.4350 | Boiserie intermedia per LED / Intermediate boiserie profile, LED equipable | ASN-C32 | ARC-C35 | VLMOA | VBT | 4350 |
| CTXLINE03LED | Coppia tappi laterali per boiserie LED / End caps for LED equipable profile | ASN-C32 | ARC-C35 | VLMOA | VBT | - |



BOISERIE LINE 03 - PROFILO INTERMEDIO



PROFILO BOISERIE INTERMEDIO / INTERMEDIATE BOISERIE PROFILE

| CODICE / CODE | DESCRIZIONE / DESCRIPTION | FINITURE DISPONIBILI / AVAILABLE FINISHES | | | | DIMENSIONI / DIMENSIONS |
|---------------|--|---|--|--|--|-------------------------|
| P032717.4350 | Boiserie intermedia forata* / Intermediate boiserie profile* | ARC-C35 | | | | 4350 |

* con 2 fori a passo.
* with pitch holes.

BOISERIE LINE 03 - PROFILO LATERALE - AGGANCI - TAPPI



PROFILO LATERALE PER BOISERIE / BOISERIE SIDE PROFILE

| CODICE / CODE | DESCRIZIONE / DESCRIPTION | FINITURE DISPONIBILI / AVAILABLE FINISHES | | | | DIMENSIONI / DIMENSIONS |
|---------------|--|---|---------|-------|-----|-------------------------|
| P032718.4350 | Profilo laterale per boiserie / Side boiserie profile | ASN-C32 | ARC-C35 | VLMOA | VBT | 4350 |
| 9721/71 | Aggancio in PVC a scatto con fori a passo / PVC bracket for side profile | PVC | | | | 80x26.3x7 |
| KTXLINE03 | Confezione con 2 coppie di tappi in PVC titanio opaco* / 2-pair kit of end caps for side profile | C32 | C35 | VLMOA | VBT | - |

Boiserie Line 03 22mm



Inquadra il QR code per il video delle istruzioni di montaggio nel nostro canale YouTube®. Scan the QR code for mounting instructions on our YouTube® channel.



LINE 03 - PROFILO SUPERIORE/INFERIORE



PROFILO BOISERIE DI CHIUSURA SUPERIORE/INFERIORE / UPPER/LOWER BOISERIE PROFILE

| CODICE / CODE | DESCRIZIONE / DESCRIPTION | FINITURE DISPONIBILI / AVAILABLE FINISHES | DIMENSIONI / DIMENSIONS |
|--------------------|---|---|-------------------------|
| P031964.4350ARCC35 | Boiserie superiore/inferiore ARC-C35 nero opaco* / Upper/Lower boiserie ARC-C35 matt black* | ARC-C35 | 4350 |

* con 1 foro a passo.
* With pitch hole.

BOISERIE LINE 03 - PROFILO DI CHIUSURA LATERALE - TAPPI



PROFILO BOISERIE DI CHIUSURA LATERALE / SIDE BOISERIE PROFILE

| CODICE / CODE | DESCRIZIONE / DESCRIPTION | FINITURE DISPONIBILI / AVAILABLE FINISHES | DIMENSIONI / DIMENSIONS |
|--------------------|---|---|-------------------------|
| P031966.4350ARCC35 | Profilo di chiusura laterale ARC-C35 nero opaco / Side closure profile ARC-C35 matt black | ARC-C35 | 4350 |

TAPPI PER BOISERIE/ BOISERIE END CAPS

| CODICE / CODE | DESCRIZIONE / DESCRIPTION | FINITURE DISPONIBILI / AVAILABLE FINISHES | DIMENSIONI / DIMENSIONS |
|------------------|--|---|-------------------------|
| CTP031966.ARCC35 | Coppia tappi in alluminio ARC-C35 nero opaco / Pair of aluminium caps ARC-C35 matt black | ARC-C35 | - |



BOISERIE LINE 03 - PROFILO INTERMEDIO

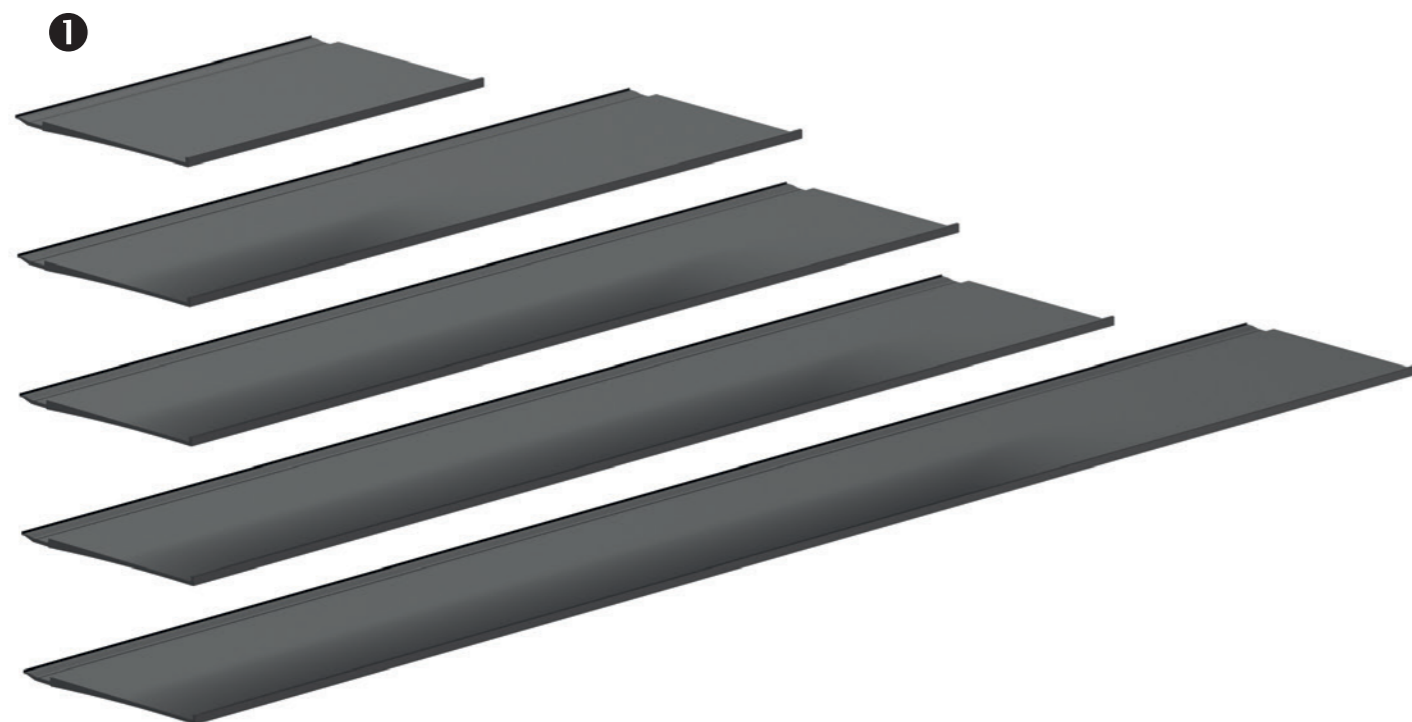


PROFILO BOISERIE INTERMEDIO / INTERMEDIATE BOISERIE PROFILE

| CODICE / CODE | DESCRIZIONE / DESCRIPTION | FINITURE DISPONIBILI / AVAILABLE FINISHES | DIMENSIONI / DIMENSIONS |
|--------------------|---|---|-------------------------|
| P031963.4350ARCC35 | Boiserie intermedia ARC-C35 nero opaco* / Intermediate boiserie ARC-C35 matt black* | ARC-C35 | 4350 |

* con 2 fori a passo, con biadesivo.
* With pitch holes and double-sided adhesive.



**1 MENSOLE PER BOISERIE / SHELVES FOR BOISERIE**

| CODICE / CODE | DESCRIZIONE / DESCRIPTION | FINITURE DISPONIBILI / FINISHES | | | | DIMENSIONI / DIMENSIONS |
|---------------|-------------------------------|---------------------------------|---------|-------|-----|-------------------------|
| P031965.265 | Mensola L. 30 / Shelf L. 30 | ASN-C32 | ARS-C35 | VLMOA | VBT | 275 |
| P031965.565 | Mensola L. 60 / Shelf L. 60 | ASN-C32 | ARS-C35 | VLMOA | VBT | 575 |
| P031965.715 | Mensola L. 75 / Shelf L. 75 | ASN-C32 | ARS-C35 | VLMOA | VBT | 725 |
| P031965.865 | Mensola L. 90 / Shelf L. 90 | ASN-C32 | ARS-C35 | VLMOA | VBT | 875 |
| P031965.1165 | Mensola L. 120 / Shelf L. 120 | ASN-C32 | ARS-C35 | VLMOA | VBT | 1165 |

2 MENSOLE PORTA CALICI PER BOISERIE / WINE GLASSES HOLDER FOR BOISERIE

| CODICE / CODE | DESCRIZIONE / DESCRIPTION | FINITURE DISPONIBILI / FINISHES | | | | DIMENSIONI / DIMENSIONS |
|---------------|--|---------------------------------|---------|-------|-----|-------------------------|
| P031965.575PC | Mensola porta-calici (6 posti) L. 60 / Wine glasses holder (6 slots) L. 60 | ASN-C32 | ARS-C35 | VLMOA | VBT | 575 |
| P031965.725PC | Mensola porta-calici (7 posti) L. 75 / Wine glasses holder (7 slots) L. 75 | ASN-C32 | ARS-C35 | VLMOA | VBT | 725 |
| P031965.875PC | Mensola porta-calici (9 posti) L. 90 / Wine glasses holder (9 slots) L. 90 | ASN-C32 | ARS-C35 | VLMOA | VBT | 875 |

3 PORTA ROTOLO DI CARTA / KITCHEN PAPER ROLL HOLDER

| CODICE / CODE | DESCRIZIONE / DESCRIPTION | FINITURE DISPONIBILI / FINISHES | | | | DIMENSIONI / DIMENSIONS |
|---------------|--|---------------------------------|---------|-------|-----|-------------------------|
| PSX.LINE03 | Porta rotolo da cucina / Kitchen paper roll holder | ARC-C32 | ARC-C35 | VLMOA | VBT | 287 |

4 MENSOLE PORTA CANOVACCIO / TOWEL HOLDER

| CODICE / CODE | DESCRIZIONE / DESCRIPTION | FINITURE DISPONIBILI / FINISHES | | | | DIMENSIONI / DIMENSIONS |
|---------------|---------------------------------|---------------------------------|---------|-------|-----|-------------------------|
| PCV.LINE03 | Porta canovaccio / Towel holder | ARC-C32 | ARC-C35 | VLMOA | VBT | 450 |

5 SET 4 GANCI / 4-HOOK SET

| CODICE / CODE | DESCRIZIONE / DESCRIPTION | FINITURE DISPONIBILI / FINISHES | | | | DIMENSIONI / DIMENSIONS |
|---------------|---------------------------|---------------------------------|---------|-------|-----|-------------------------|
| KG.LINE03 | Set 4 ganci / 4-hook set | ARC-C32 | ARC-C35 | VLMOA | VBT | - |

6 PORTA TABLET / TABLET HOLDER

| CODICE / CODE | DESCRIZIONE / DESCRIPTION | FINITURE DISPONIBILI / FINISHES | | | | DIMENSIONI / DIMENSIONS |
|---------------|------------------------------|---------------------------------|---------|-------|-----|-------------------------|
| PI.LINE03 | Porta tablet / Tablet holder | ARC-C32 | ARC-C35 | VLMOA | VBT | - |

7 PORTA COLTELLI / KNIVES HOLDER

| CODICE / CODE | DESCRIZIONE / DESCRIPTION | FINITURE DISPONIBILI / FINISHES | | | | DIMENSIONI / DIMENSIONS |
|---------------|--------------------------------------|---------------------------------|---------|-------|-----|-------------------------|
| PC.LINE03 | Ceppo porta coltelli / Knives holder | ARC-C32 | ARC-C35 | VLMOA | VBT | - |

8 KIT STAFFE PER UNITÀ PENSILE O TV / BRACKET FOR CABINET OR TV

| CODICE / CODE | DESCRIZIONE / DESCRIPTION | FINITURE DISPONIBILI / FINISHES | | | | DIMENSIONI / DIMENSIONS |
|---------------|---|---------------------------------|--|--|--|-------------------------|
| PP.LINE03 | Kit staffe per unità pensile o TV / Bracket kit for cabinet or TV | FERRO ZINCATO / GALVANISED IRON | | | | - |

Modus da appoggio





MODUS DA APPOGGIO PONTE 600



| CODICE / CODE | DESCRIZIONE / DESCRIPTION | FINITURE DISPONIBILI / AVAILABLE FINISHES | DIMENSIONI / DIMENSIONS |
|--------------------------|--|---|-------------------------|
| ModusAppoggio1.600ASNC32 | MODUS da appoggio Ponte L600 titanio metal / MODUS Bridge L600 titanium metal | ASN-C32 | 600x240x150 |
| ModusAppoggio1.600ARSC35 | MODUS da appoggio Ponte L600 nero spazzolato / MODUS Bridge L600 brushed black | ARS-C35 | 600x240x150 |



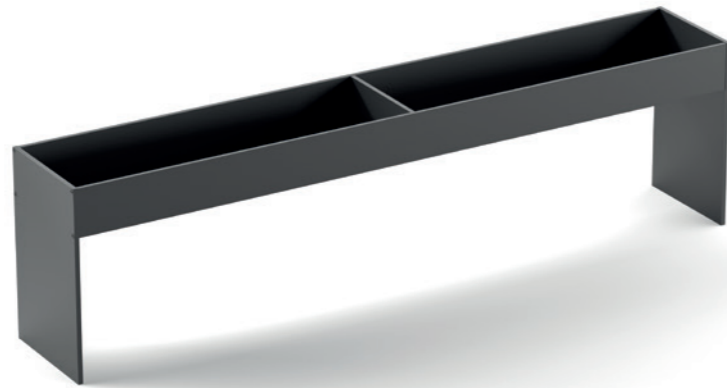
MODUS DA APPOGGIO DOPPIO 600



| CODICE / CODE | DESCRIZIONE / DESCRIPTION | FINITURE DISPONIBILI / AVAILABLE FINISHES | DIMENSIONI / DIMENSIONS |
|--------------------------|---|---|-------------------------|
| ModusAppoggio2.600ASNC32 | MODUS da appoggio Doppio L600 titanio metal / MODUS Double L600 titanium metal | ASN-C32 | 600x300x150 |
| ModusAppoggio2.600ARSC35 | MODUS da appoggio Doppio L600 nero spazzolato / MODUS Double L600 brushed black | ARS-C35 | 600x300x150 |



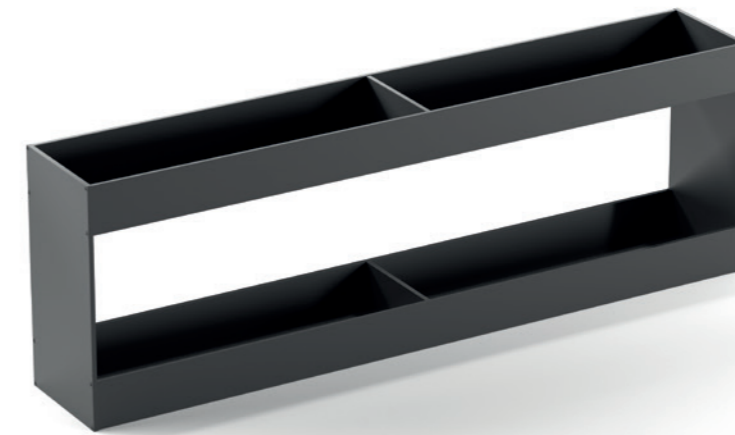
MODUS DA APPOGGIO PONTE 900



| CODICE / CODE | DESCRIZIONE / DESCRIPTION | FINITURE DISPONIBILI / AVAILABLE FINISHES | DIMENSIONI / DIMENSIONS |
|--------------------------|--|---|-------------------------|
| ModusAppoggio1.900ASNC32 | MODUS da appoggio Ponte L900 titanio metal / MODUS Bridge L900 titanium metal | ASN-C32 | 900x240x150 |
| ModusAppoggio1.900ARSC35 | MODUS da appoggio Ponte L900 nero spazzolato / MODUS Bridge L900 brushed black | ARS-C35 | 900x240x150 |



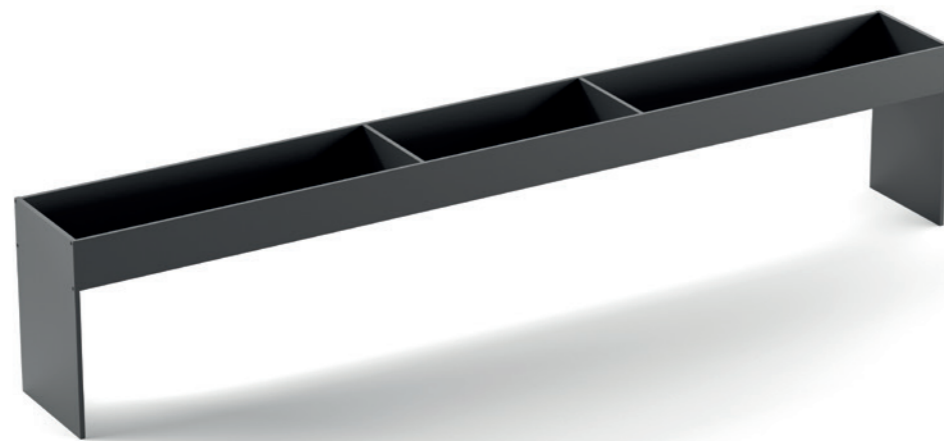
MODUS DA APPOGGIO DOPPIO 900



| CODICE / CODE | DESCRIZIONE / DESCRIPTION | FINITURE DISPONIBILI / AVAILABLE FINISHES | DIMENSIONI / DIMENSIONS |
|--------------------------|---|---|-------------------------|
| ModusAppoggio2.900ASNC32 | MODUS da appoggio Doppio L900 titanio metal / MODUS Double L900 titanium metal | ASN-C32 | 900x300x150 |
| ModusAppoggio2.900ARSC35 | MODUS da appoggio Doppio L900 nero spazzolato / MODUS Double L900 brushed black | ARS-C35 | 900x300x150 |



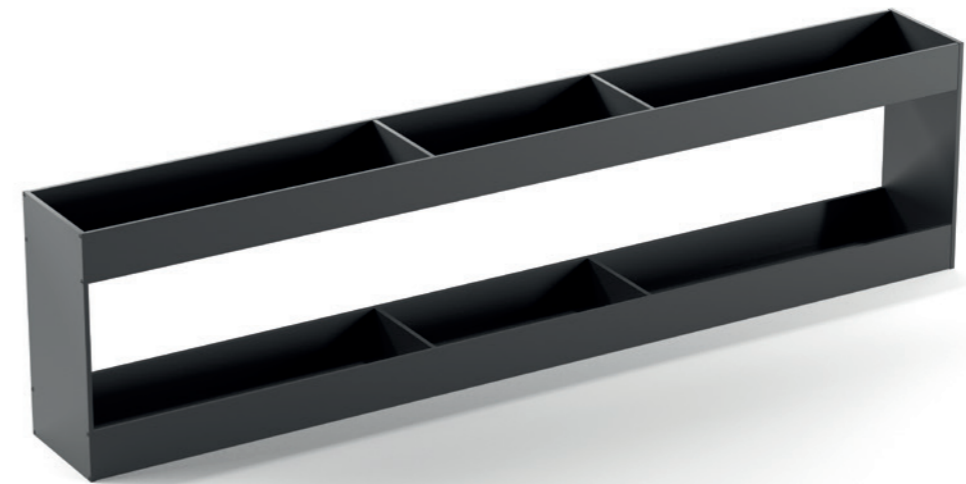
MODUS DA APPOGGIO PONTE 1200



| CODICE / CODE | DESCRIZIONE / DESCRIPTION | FINITURE DISPONIBILI / AVAILABLE FINISHES | DIMENSIONI / DIMENSIONS |
|---------------------------|--|---|-------------------------|
| ModusAppoggio1.1200ASNC32 | MODUS da appoggio Ponte L1200 titanio metal / MODUS Bridge L1200 titanium metal | ASN-C32 | 1200x240x150 |
| ModusAppoggio1.1200ARSC35 | MODUS da appoggio Ponte L1200 nero spazzolato / MODUS Bridge L1200 brushed black | ARS-C35 | 1200x240x150 |



MODUS DA APPOGGIO DOPPIO 1200



| CODICE / CODE | DESCRIZIONE / DESCRIPTION | FINITURE DISPONIBILI / AVAILABLE FINISHES | DIMENSIONI / DIMENSIONS |
|---------------------------|---|---|-------------------------|
| ModusAppoggio2.1200ASNC32 | MODUS da appoggio Doppio L1200 titanio metal / MODUS Double L1200 titanium metal | ASN-C32 | 1200x300x150 |
| ModusAppoggio2.1200ARSC35 | MODUS da appoggio Doppio L1200 nero spazzolato / MODUS Double L1200 brushed black | ARS-C35 | 1200x300x150 |

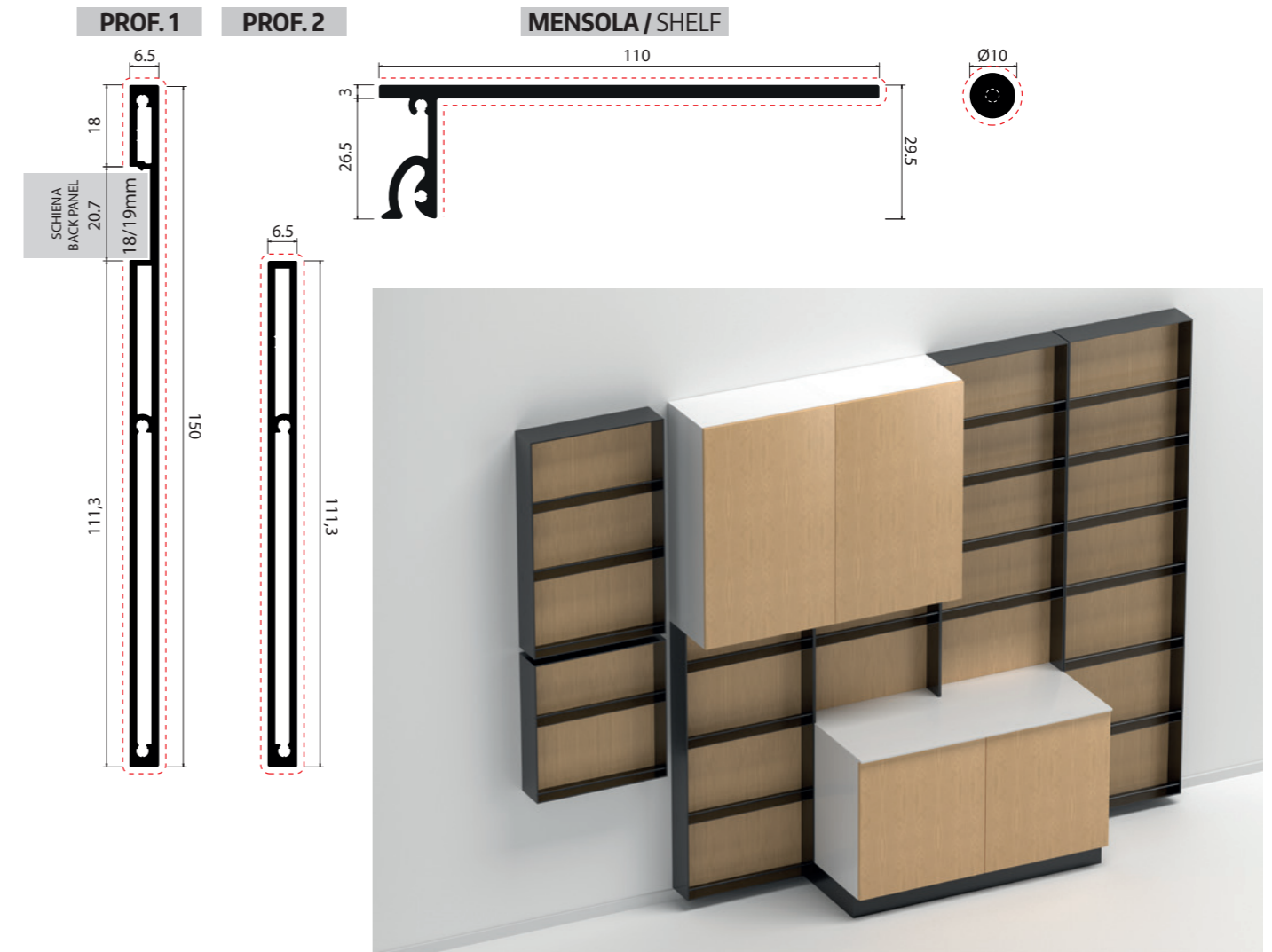
Modus

MODUS



Vano a giorno che, grazie alla sua ridotta profondità, può essere inserito tra base e pensile con moduli adattabili a tutte le soluzioni. Innovative solution that, thanks to its reduced depth, can be inserted between the base unit and the wall unit, with modules that are adaptable to every customization.

Quote - Quotes



ACCESSORI / ACCESSORIES

| RIF / REF | CODICE / CODE | DESCRIZIONE / DESCRIPTION | FINITURE DISPONIBILI / AVAILABLE FINISHES | | DIMENSIONI / DIMENSIONS |
|-----------|----------------|--|---|---------|-------------------------|
| 1 | D.1311.350KPCL | Porta calici / Wine glasses holder | ARC-C35 | ARC-C32 | 150 |
| 2 | PCOLTELLI | Porta coltelli / Knives holder | ARC-C35 | ARC-C32 | 287 |
| 3 | PIPAD | Kit porta tablet / Tablet holder | ARC-C35 | ARC-C32 | 200 |
| 4 | D.1314.287PRP | Porta rotolo da cucina / Kitchen paper roll holder | ARC-C35 | ARC-C32 | 287 |
| 5 | D.1314.450PCP | Porta canovaccio / Towel holder | ARC-C35 | ARC-C32 | 450 |
| 6 | SET4GANCI | Set 4 ganci / 4-hook set | ARC-C35 | ARC-C32 | --- |

ACCESSORI - ACCESSORIES



Ossicolor Srl si riserva di eseguire le modifiche che riterrà opportune senza darne preavviso. Ossicolor Srl reserves the right to modify and update the manual, without notice.

MODUS

DESIGN SELECTION



MODELLO A, ALTEZZA PERSONALIZZABILE 510-720 / TYPE A, CUSTOMISABLE HEIGHT 510-720

| A 1 MODUS "H" 2 LATI CON ALLOGGIO PER SCHIENA* - TRA BASE E PENSILE / A 1 MODUS 2 SIDES "H" FOR BACK PANEL* - BETWEEN COUNTERTOP AND CABINET | | | | |
|--|--|---|---------|-------------------------|
| CODICE / CODE | DESCRIZIONE / DESCRIPTION | FINITURE DISPONIBILI / AVAILABLE FINISHES | | DIMENSIONI / DIMENSIONS |
| MODUS2LATICS.300 | MODUS H 2 lati con alloggio per schiena* / MODUS - 2 sides "H" for back panel* | ARS-C35 | ASN-C32 | 300x510-720x150 |
| MODUS2LATICS.450 | MODUS H 2 lati con alloggio per schiena* / MODUS - 2 sides "H" for back panel* | ARS-C35 | ASN-C32 | 450x510-720x150 |
| MODUS2LATICS.600 | MODUS H 2 lati con alloggio per schiena* / MODUS - 2 sides "H" for back panel* | ARS-C35 | ASN-C32 | 600x510-720x150 |
| MODUS2LATICS.900 | MODUS H 2 lati con alloggio per schiena* / MODUS - 2 sides "H" for back panel* | ARS-C35 | ASN-C32 | 900x510-720x150 |
| MODUS2LATICS.1200 | MODUS H 2 lati con alloggio per schiena* / MODUS - 2 sides "H" for back panel* | ARS-C35 | ASN-C32 | 1200x510-720x150 |

* Schiena non inclusa / * back panel not included

| A 2 MODUS "H" 2 LATI - TRA BASE E PENSILE / A 2 MODUS 2 SIDES "H" FOR BACK PANEL | | | | |
|--|--------------------------------------|---|---------|-------------------------|
| CODICE / CODE | DESCRIZIONE / DESCRIPTION | FINITURE DISPONIBILI / AVAILABLE FINISHES | | DIMENSIONI / DIMENSIONS |
| MODUS2LATI.300 | MODUS H 2 lati / MODUS - 2 sides "H" | ARS-C35 | ASN-C32 | 300x510-720x110 |
| MODUS2LATI.450 | MODUS H 2 lati / MODUS - 2 sides "H" | ARS-C35 | ASN-C32 | 450x510-720x110 |
| MODUS2LATI.600 | MODUS H 2 lati / MODUS - 2 sides "H" | ARS-C35 | ASN-C32 | 600x510-720x110 |
| MODUS2LATI.900 | MODUS H 2 lati / MODUS - 2 sides "H" | ARS-C35 | ASN-C32 | 900x510-720x110 |
| MODUS2LATI.1200 | MODUS H 2 lati / MODUS - 2 sides "H" | ARS-C35 | ASN-C32 | 1200x510-720x110 |



MODELLO B, ALTEZZA PERSONALIZZABILE 1110-1600 / TYPE B, CUSTOMISABLE HEIGHT 1110-1600

| B 1 MODUS 3 LATI CON ALLOGGIO PER SCHIENA* - SOPRATOP / B 1 MODUS 3 SIDES FOR BACK PANEL* - ON COUNTERTOP | | | | |
|---|--|---|---------|-------------------------|
| CODICE / CODE | DESCRIZIONE / DESCRIPTION | FINITURE DISPONIBILI / AVAILABLE FINISHES | | DIMENSIONI / DIMENSIONS |
| MODUS3LATICS.300 | MODUS 3 lati per schiena* sopratop / MODUS - 3 sides for back panel* on countertop | ARS-C35 | ASN-C32 | 300x1110-1600x150 |
| MODUS3LATICS.450 | MODUS 3 lati per schiena* sopratop / MODUS - 3 sides for back panel* on countertop | ARS-C35 | ASN-C32 | 450x1110-1600x150 |
| MODUS3LATICS.600 | MODUS 3 lati per schiena* sopratop / MODUS - 3 sides for back panel* on countertop | ARS-C35 | ASN-C32 | 600x1110-1600x150 |
| MODUS3LATICS.900 | MODUS 3 lati per schiena* sopratop / MODUS - 3 sides for back panel* on countertop | ARS-C35 | ASN-C32 | 900x1110-1600x150 |
| MODUS3LATICS.1200 | MODUS 3 lati per schiena* sopratop / MODUS - 2 sides for back panel* on countertop | ARS-C35 | ASN-C32 | 1200x1110-1600x150 |

* Schiena non inclusa / * back panels not included

| B 2 MODUS 3 LATI - SOPRATOP / B 2 MODUS 3 SIDES - ON COUNTERTOP | | | | |
|---|---|---|---------|-------------------------|
| CODICE / CODE | DESCRIZIONE / DESCRIPTION | FINITURE DISPONIBILI / AVAILABLE FINISHES | | DIMENSIONI / DIMENSIONS |
| MODUS3LATI.300 | MODUS 3 lati sopratop / MODUS - 3 sides on countertop | ARS-C35 | ASN-C32 | 300x1110-1600x110 |
| MODUS3LATI.450 | MODUS 3 lati sopratop / MODUS - 3 sides on countertop | ARS-C35 | ASN-C32 | 450x1110-1600x110 |
| MODUS3LATI.600 | MODUS 3 lati sopratop / MODUS - 3 sides on countertop | ARS-C35 | ASN-C32 | 600x1110-1600x110 |
| MODUS3LATI.900 | MODUS 3 lati sopratop / MODUS - 3 sides on countertop | ARS-C35 | ASN-C32 | 900x1110-1600x110 |
| MODUS3LATI.1200 | MODUS 3 lati sopratop / MODUS - 3 sides on countertop | ARS-C35 | ASN-C32 | 1200x1110-1600x110 |

MOD. C ①

MOD. C ②

MOD. E ①

MOD. E ②



MODELLO C, ALTEZZA PERSONALIZZABILE 1270-1600 / TYPE C, CUSTOMISABLE HEIGHT 1270-1600

C ① MODUS 3 LATI CON ALLOGGIO PER SCHIENA* - SOTTO PENSILE / C ① MODUS 3 SIDES FOR BACK PANEL* - UNDER CABINET

| CODICE / CODE | DESCRIZIONE / DESCRIPTION | FINITURE DISPONIBILI / AVAILABLE FINISHES | | DIMENSIONI / DIMENSIONS |
|--------------------|---|---|---------|-------------------------|
| MODUS3LATICCS.300 | MODUS 3 lati per schiena* sotto pensile / MODUS - 3 sides for back panel* under cabinet | ARS-C35 | ASN-C32 | 300x1270-1600x150 |
| MODUS3LATICCS.450 | MODUS 3 lati per schiena* sotto pensile / MODUS - 3 sides for back panel* under cabinet | ARS-C35 | ASN-C32 | 450x1270-1600x150 |
| MODUS3LATICCS.600 | MODUS 3 lati per schiena* sotto pensile / MODUS - 3 sides for back panel* under cabinet | ARS-C35 | ASN-C32 | 600x1270-1600x150 |
| MODUS3LATICCS.900 | MODUS 3 lati per schiena* sotto pensile / MODUS - 3 sides for back panel* under cabinet | ARS-C35 | ASN-C32 | 900x1270-1600x150 |
| MODUS3LATICCS.1200 | MODUS 3 lati per schiena* sotto pensile / MODUS - 3 sides for back panel* under cabinet | ARS-C35 | ASN-C32 | 1200x1270-1600x150 |

* Schiena non inclusa / * back panel not included

C ② MODUS 3 LATI - SOTTO PENSILE / C ② MODUS 3 SIDES - UNDER CABINET

| CODICE / CODE | DESCRIZIONE / DESCRIPTION | FINITURE DISPONIBILI / AVAILABLE FINISHES | | DIMENSIONI / DIMENSIONS |
|-----------------|--|---|---------|-------------------------|
| MODUS3LATI.300 | MODUS 3 lati Sotto pensile / MODUS - 3 sides under cabinet | ARS-C35 | ASN-C32 | 300x1270-1600x110 |
| MODUS3LATI.450 | MODUS 3 lati Sotto pensile / MODUS - 3 sides under cabinet | ARS-C35 | ASN-C32 | 450x1270-1600x110 |
| MODUS3LATI.600 | MODUS 3 lati Sotto pensile / MODUS - 3 sides under cabinet | ARS-C35 | ASN-C32 | 600x1270-1600x110 |
| MODUS3LATI.900 | MODUS 3 lati Sotto pensile / MODUS - 3 sides under cabinet | ARS-C35 | ASN-C32 | 900x1270-1600x110 |
| MODUS3LATI.1200 | MODUS 3 lati Sotto pensile / MODUS - 3 side under cabinet | ARS-C35 | ASN-C32 | 1200x1270-1600x110 |

MODELLO E, ALTEZZA PERSONALIZZABILE 820-960 / TYPE E, CUSTOMISABLE HEIGHT 820-960

E ① MODUS 4 LATI CON ALLOGGIO PER SCHIENA* / E ① MODUS 4 SIDES FOR BACK PANEL*

| CODICE / CODE | DESCRIZIONE / DESCRIPTION | FINITURE DISPONIBILI / AVAILABLE FINISHES | | DIMENSIONI / DIMENSIONS |
|-------------------|--|---|---------|-------------------------|
| MODUS4LATIC1.300 | MODUS 4 lati per schiena / MODUS - 4 sides | ARS-C35 | ASN-C32 | 300x820-960x150 |
| MODUS4LATIC1.450 | MODUS 4 lati per schiena / MODUS - 4 sides | ARS-C35 | ASN-C32 | 450x820-960x150 |
| MODUS4LATIC1.600 | MODUS 4 lati per schiena / MODUS - 4 sides | ARS-C35 | ASN-C32 | 600x820-960x150 |
| MODUS4LATIC1.900 | MODUS 4 lati per schiena / MODUS - 4 sides | ARS-C35 | ASN-C32 | 900x820-960x150 |
| MODUS4LATIC1.1200 | MODUS 4 lati per schiena / MODUS - 4 sides | ARS-C35 | ASN-C32 | 1200x820-960x150 |

* Schiena non inclusa / * back panel not included

E ② MODUS 4 LATI / E ② MODUS 4 SIDES

| CODICE / CODE | DESCRIZIONE / DESCRIPTION | FINITURE DISPONIBILI / AVAILABLE FINISHES | | DIMENSIONI / DIMENSIONS |
|-----------------|--------------------------------|---|---------|-------------------------|
| MODUS4LATI.300 | MODUS 4 lati / MODUS - 4 Sides | ARS-C35 | ASN-C32 | 300x820-960x110 |
| MODUS4LATI.450 | MODUS 4 lati / MODUS - 4 Sides | ARS-C35 | ASN-C32 | 450x820-960x110 |
| MODUS4LATI.600 | MODUS 4 lati / MODUS - 4 Sides | ARS-C35 | ASN-C32 | 600x820-960x110 |
| MODUS4LATI.900 | MODUS 4 lati / MODUS - 4 Sides | ARS-C35 | ASN-C32 | 900x820-960x110 |
| MODUS4LATI.1200 | MODUS 4 lati / MODUS - 4 Sides | ARS-C35 | ASN-C32 | 1200x820-960x110 |

MOD. F ①

MOD. F ②

MOD. D ①

MOD. D ②



MODELLO D, ALTEZZA PERSONALIZZABILE 1880-2320 / TYPE D, CUSTOMISABLE HEIGHT 1880-2320

D ① MODUS 4 LATI CON ALLOGGIO PER SCHIENA* / D ① MODUS 4 SIDES FOR BACK PANEL*

| CODICE / CODE | DESCRIZIONE / DESCRIPTION | FINITURE DISPONIBILI / AVAILABLE FINISHES | | DIMENSIONI / DIMENSIONS |
|-------------------|---|---|---------|-------------------------|
| MODUS4LATIC1.300 | MODUS 4 lati per schiena* / MODUS - 4 sides for back panel* | ARS-C35 | ASN-C32 | 300x1880-2320x150 |
| MODUS4LATIC1.450 | MODUS 4 lati per schiena* / MODUS - 4 sides for back panel* | ARS-C35 | ASN-C32 | 450x1880-2320x150 |
| MODUS4LATIC1.600 | MODUS 4 lati per schiena* / MODUS - 4 sides for back panel* | ARS-C35 | ASN-C32 | 600x1880-2320x150 |
| MODUS4LATIC1.900 | MODUS 4 lati per schiena* / MODUS - 4 sides for back panel* | ARS-C35 | ASN-C32 | 900x1880-2320x150 |
| MODUS4LATIC1.1200 | MODUS 4 lati per schiena* / MODUS - 4 sides for back panel* | ARS-C35 | ASN-C32 | 1200x1880-2320x150 |

* Schiena non inclusa / * back panel not included

D ② MODUS 4 LATI / D ② MODUS 4 SIDES

| CODICE / CODE | DESCRIZIONE / DESCRIPTION | FINITURE DISPONIBILI / AVAILABLE FINISHES | | DIMENSIONI / DIMENSIONS |
|-----------------|--------------------------------|---|---------|-------------------------|
| MODUS4LATI.300 | MODUS 4 lati / MODUS - 4 sides | ARS-C35 | ASN-C32 | 300x1880-2320x110 |
| MODUS4LATI.450 | MODUS 4 lati / MODUS - 4 sides | ARS-C35 | ASN-C32 | 450x1880-2320x110 |
| MODUS4LATI.600 | MODUS 4 lati / MODUS - 4 sides | ARS-C35 | ASN-C32 | 600x1880-2320x110 |
| MODUS4LATI.900 | MODUS 4 lati / MODUS - 4 sides | ARS-C35 | ASN-C32 | 900x1880-2320x110 |
| MODUS4LATI.1200 | MODUS 4 lati / MODUS - 4 side | ARS-C35 | ASN-C32 | 1200x1880-2320x110 |

MODELLO F, ALTEZZA PERSONALIZZABILE 720-810 / TYPE F, CUSTOMISABLE HEIGHT 720-810

F ① MODUS 4 LATI CON ALLOGGIO PER SCHIENA* / F ① MODUS 4 SIDES FOR BACK PANEL*

| CODICE / CODE | DESCRIZIONE / DESCRIPTION | FINITURE DISPONIBILI / AVAILABLE FINISHES | | DIMENSIONI / DIMENSIONS |
|-------------------|---|---|---------|-------------------------|
| MODUS4LATIC2.300 | MODUS 4 lati per schiena* / MODUS - 4 sides for back panel* | ARS-C35 | ASN-C32 | 300x720-810x150 |
| MODUS4LATIC2.450 | MODUS 4 lati per schiena* / MODUS - 4 sides for back panel* | ARS-C35 | ASN-C32 | 450x720-810x150 |
| MODUS4LATIC2.600 | MODUS 4 lati per schiena* / MODUS - 4 sides for back panel* | ARS-C35 | ASN-C32 | 600x720-810x150 |
| MODUS4LATIC2.900 | MODUS 4 lati per schiena* / MODUS - 4 sides for back panel* | ARS-C35 | ASN-C32 | 900x720-810x150 |
| MODUS4LATIC2.1200 | MODUS 4 lati per schiena* / MODUS - 4 sides for back panel* | ARS-C35 | ASN-C32 | 1200x720-810x150 |

* Schiena non inclusa / * back panel not included

F ② MODUS 4 LATI / F ② MODUS 4 SIDES

| CODICE / CODE | DESCRIZIONE / DESCRIPTION | FINITURE DISPONIBILI / AVAILABLE FINISHES | | DIMENSIONI / DIMENSIONS |
|------------------|--------------------------------|---|---------|-------------------------|
| MODUS4LATI2.300 | MODUS 4 lati / MODUS - 4 sides | ARS-C35 | ASN-C32 | 300x720-810x110 |
| MODUS4LATI2.450 | MODUS 4 lati / MODUS - 4 sides | ARS-C35 | ASN-C32 | 450x720-810x110 |
| MODUS4LATI2.600 | MODUS 4 lati / MODUS - 4 sides | ARS-C35 | ASN-C32 | 600x720-810x110 |
| MODUS4LATI2.900 | MODUS 4 lati / MODUS - 4 sides | ARS-C35 | ASN-C32 | 900x720-810x110 |
| MODUS4LATI2.1200 | MODUS 4 lati / MODUS - 4 sides | ARS-C35 | ASN-C32 | 1200x720-810x110 |



OSSICOLOR

innovative aluminium

Ossicolor Srl

Via Fontanele, 126 - 38010 Spormaggiore (TN) Italy

Tel. +39 0461 653127 - Fax +39 0461 653546

info@ossicolor.it - sales@ossicolor.it

www.ossicolor.it

